

### GENERAL INFORMATION

Type	V3EA112M6AB3YY	Construction	IM B3	Ambient Temp. [°C]	-20 / +40
Pout [kW]	2,2	Duty	S1	Vibration Class	A
Speed [rpm]	968	Degree of Protection	IP55	Rotation	CW-CCW
Frame	112M	Cooling Method	IC411	Temperature Class	B
Current [A]	10	Insulation Class	F	Altitude above sea [m]	1000
cos φ	0,65	Weight [kg]			
Efficiency Class	IE3				

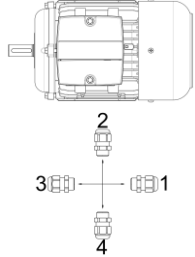
### ELECTRICAL DATA ( RAW MEASUREMENT DATA )

V1	%Load	T [Nm]	I [A]	rpm	P2 [W]	cos φ	Efficiency	Hz
380	100	21,7	6,0	968	2200	0,65	84,3	50
380	75	16,2	5,3	975	1650	0,56	83	50
380	50	10,7	4,8	985	1100	0,42	78,1	50

Locked Rotor Current	Ia [A]	38	Breakdown Torque	Mk [Nm]	79,2
	Ia / In	3,80		Mk / Mn	3,65
Locked Rotor Torque	Ma [Nm]	56,6	No Load Current	[A]	4,1
	Ma / Mn	2,61	No Load Power	[W]	298

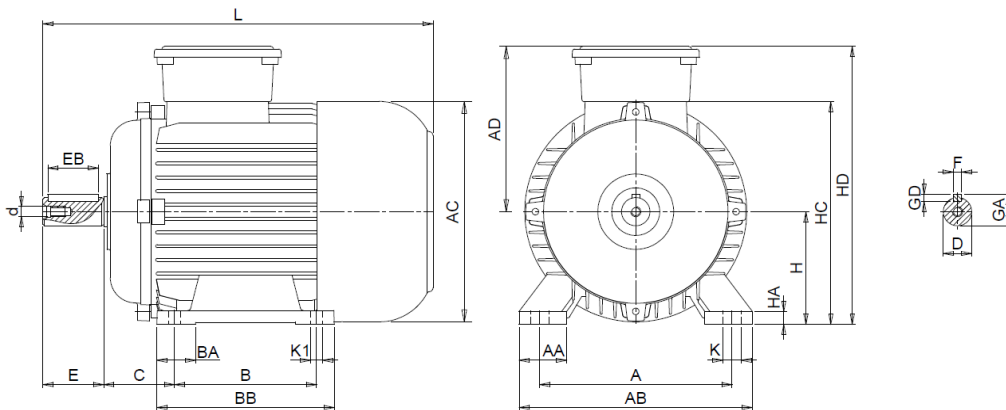
### MECHANICAL DATA

DE Bearing	6206-ZZ	Sound Pressure - 50 Hz - dB[B]	77	
NDE Bearing	6206-ZZ	Sound Pressure - 60 Hz - dB[B]	78	
Fixed Bearing	YES	Housing Material	Aluminium	
Lubrication	-	DE Shield Material	Aluminium	
Grease Amount	-	Terminal Box Material	Polyamide	
Grease Type	-	Cable Entry	M25	
Feather Key	8*7*50	Cable Gland Position	4	
Balance	G 1,6 Half Key			

### MECHANICAL DIMENSIONS

A	AA*	AB*	AC*	AD*	B	B'*	BA*	BB*	C	D	d	E	EB	F	GA
190	51	228	219	166	140	-	38	175	70	28	M10	60	50	8	31
GD	H	HA*	HC*	HD*	K*	K1	L*	LA*	LB*	M	N	P	S	S1	T
7	112	13	221,5	278	18	12	421,9	-	-	-	-	-	-	-	-

Non standard dimensions[\*] for IEC 60072-1 may vary.



Kazim Karabekir Cad. No:84 Kemalpaşa 35735 İzmir/Turkey

Tel: +90 (232) 877 10 60 (pbx)

Fax: +90 (232) 877 10 59

Email: info@voltmotor.com.tr

www.voltmotor.com.tr/en/

Volt Motor has right to change all the data without prior notice.